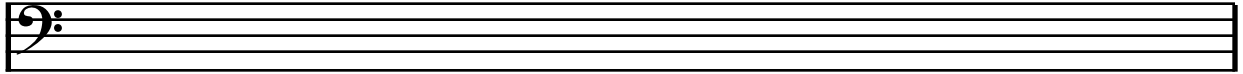
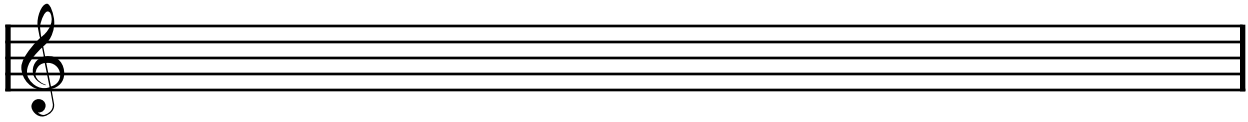
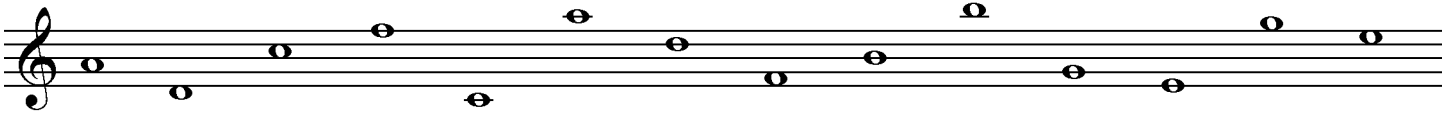
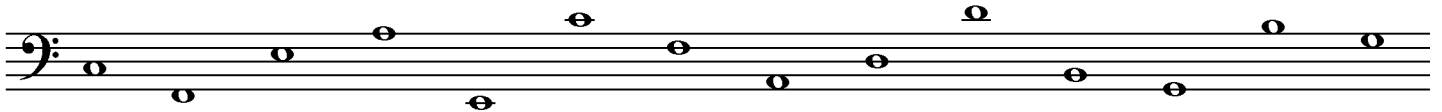


1. Carefully draw the treble clef and the bass clef signs five times each.




2. Write the name of each of the following notes on the line below the staff.





3. Name each of the following notes and give its value in common time ($\frac{4}{4}$).





a)  name: _____ value: _____ beats.





b)  name: _____ value: _____ beats.





c)  name: _____ value: _____ beats.





d)  name: _____ value: _____ beats.

4. Write one number in each space.

a) One  equals _____  and equals _____  and equals _____  ?
how many how many how many

b) Two  equal _____  and equal _____  and equal _____  ?
how many how many how many

c) Four  equal _____  and equal _____  and equal _____  ?
how many how many how many

d) Eight  equal _____  and equal _____  and equal _____  ?
how many how many how many